

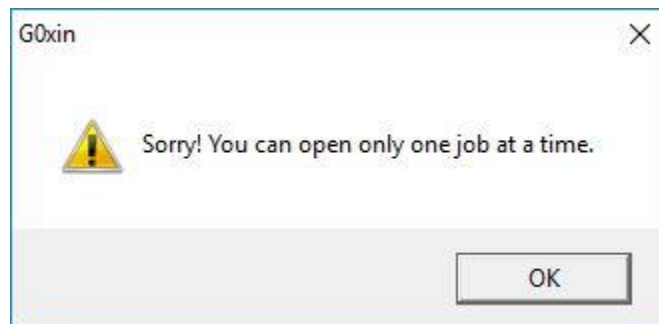
G0xin

Warnings & Errors

Introduction

This document describes some important warning / error messages shown by the software. The document describes the meaning of each such message, along with suggestions to remove them, wherever possible.

1) One job at a time

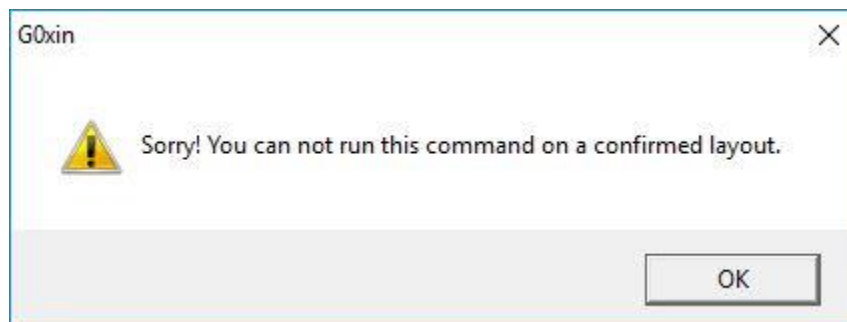


The software allows you to view only one job file at a time.

So, if you select the command **File > Open** without closing the old job file, you will see this message.

To solve the problem, close the old job file window and then, select the command **File > Open**.

2) Confirmed layout can not be modified



The software will not allow you to change a nested layout which has already been confirmed.

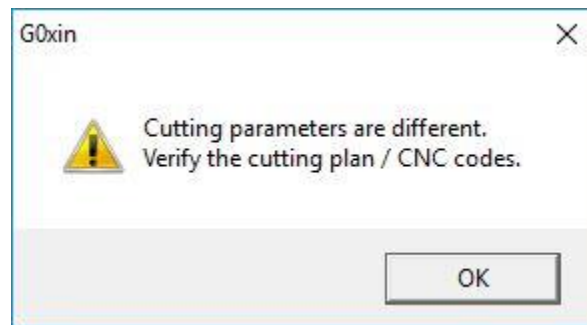
So, if you select a command that modifies a confirmed layout (like, rotate a nested piece), you will see this message.

G0xin Warnings & Errors

Although you may be able to solve this problem by un-confirming the layout, you should not do so. This may lead to other errors. The right solution is as follows.

- A) Complete all the editing commands before confirming a layout.
- B) Confirm a layout only when required i.e. when you are ready to cut the layout on the machine.

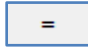
3) Variation in cutting parameters



The software always reads all the nesting & cutting parameters from the file **C:\g0xin\materials.csv** while starting. Then, the software keeps checking whether the current job as well as other planned job files are using the same parameters or not. If there is a mismatch in any file, the software displays this message.

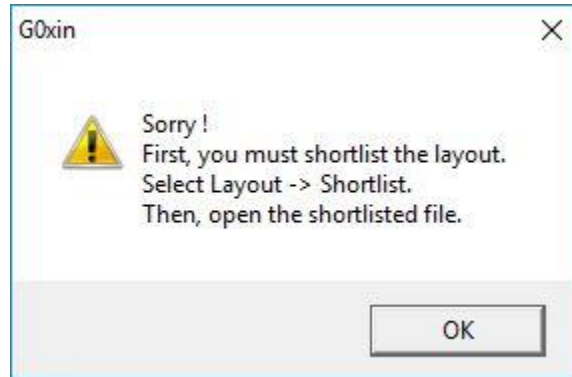
So, if you create a nesting job using a [material & thickness] group and then, modify its cutting parameters later, you may see this message.

To solve the problem, do the following.

- A) Do not modify the parameters by pressing the small button  while viewing the cutting parameters in the software. (This option allows you to modify the properties temporarily. But, it must be used only if you want to discard the nested job file later. Do not use this facility in order to do your work quickly.)
- B) Do not modify the file **C:\g0xin\materials.csv** in such a way that it changes the parameters of a [material & thickness] group, which has already been used before. (Note, you can always add a new [material & thickness] group in this file without any problem. It is also ok to change the parameters of a [material & thickness] group which has never been used before. You will face this problem only if you modify the properties of a row which has already been used before.)
- C) Delete old planning files regularly from your job folder. (Planning files have the name **plan_*.job** and your job folder is usually located within your data folder named **<Data-Drive>:/Gnotdata**.)

4) Shortlist before confirming a layout

G0xin Warnings & Errors



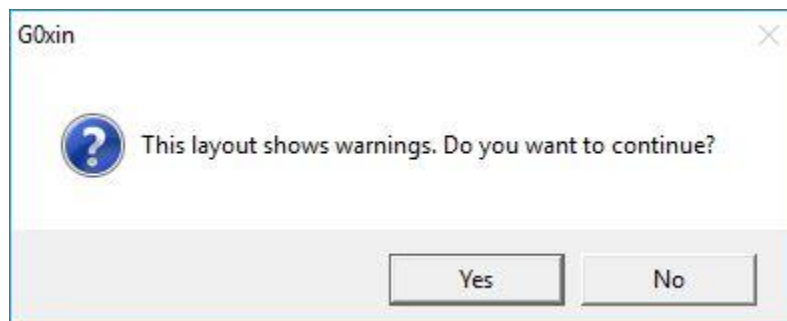
The software can confirm only that layout which has been shortlisted.

So, if you select the command **Layout > Confirm** without shortlisting the current layout, you will see this message.

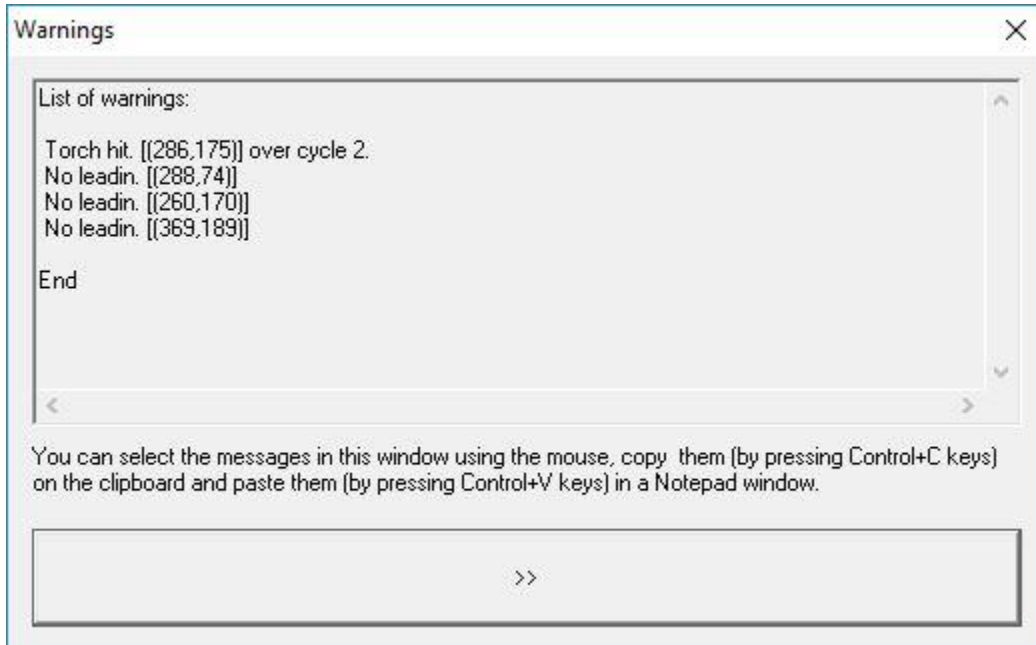
To solve the problem, do the following.

- A) Select the command **Layout > Shortlist**.
- B) When the command is over, you will see the name of the shortlisted file on your screen. Note it down.
- C) Close the current job file.
- D) Open the shortlisted file (refer step B above).
- E) Now, select the command **Layout > Confirm**.

5) Validation before confirmation



G0xin Warnings & Errors



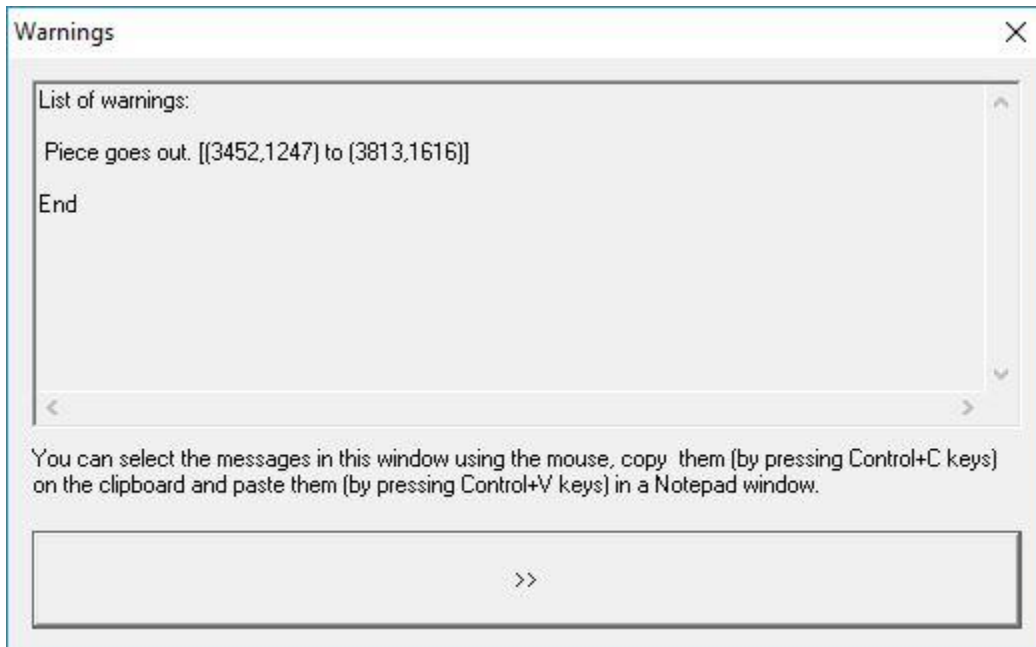
The software does not allow you to modify a confirmed layout.

So, if there is any error in a confirmed layout, you can not remove the error later. To avoid this situation, the software automatically checks the layout and shows you warning messages, whenever you try to confirm a layout.

If you want, you can break the confirmation command at this stage by selecting the **NO** button above. This will allow you to modify the layout and remove the warnings, before confirming it later.

6) Validation

G0xin Warnings & Errors



The software can check whether the last command run by you was ok or not. The software also allows you to check a layout at any point of time using the command **Layout > Validate**.

So, you may see this message if the software finds any problem with the last command run by you or when you validate an entire nested layout.

If you disable the option **Tools > Options > General > Automatic Validation**, the software will hide the errors found in the last command run by you.

7) Password error



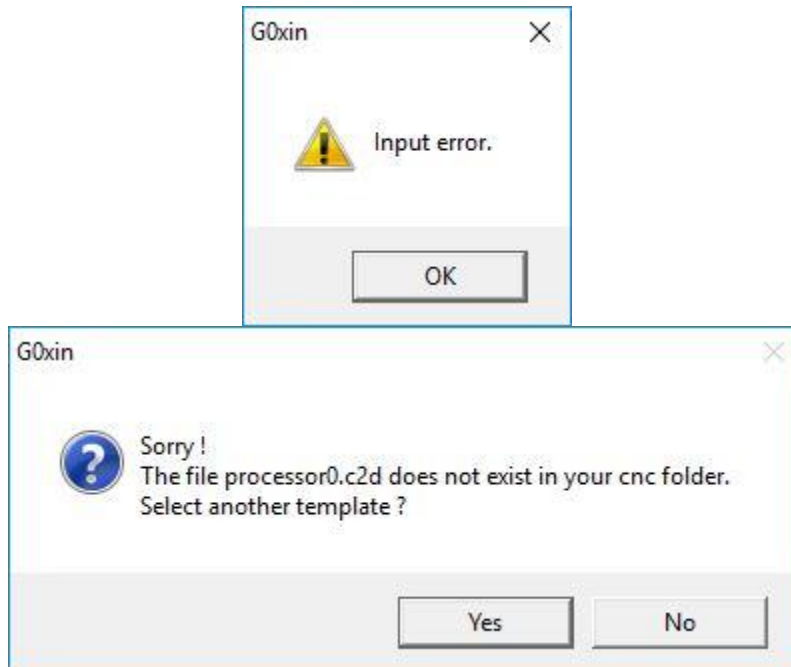
The software allows you to confirm a layout, only if you type a valid password.

G0xin Warnings & Errors

So, if you type an invalid password, you will see an error message, starting with the words **Error code – xxx**. (Note, a password can become invalid for number of reasons. Like, the credit limit is over, time limit is over, file system is not ok, etc.)

In this case, you may have to get in touch with your supplier, with relevant details and backup files.

8) Missing signature / post-processor



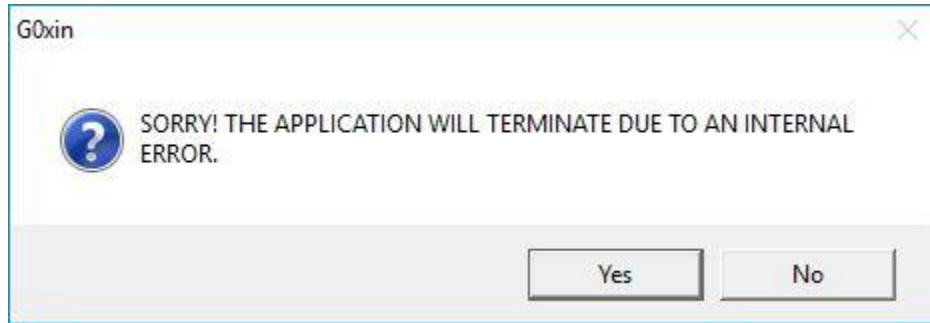
The software reads the signature and post-processor files from fixed locations / files.

So, if the software does not find these files at appropriate locations, you will see this message.

To solve the problem, copy the signature and post-processor files, as explained in the installation procedure.

9) Internal error

G0xin Warnings & Errors



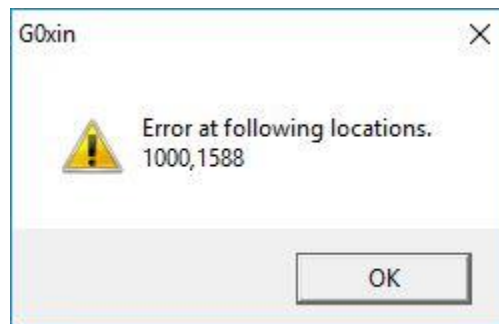
The software keeps checking its own calculations internally, in order to increase its reliability.

At times, if the software finds anything wrong with its own calculations, you may see this message.

In such cases, do the following.

- A) Click on the **NO** button.
- B) Note down the series of commands that led to this problem and take backup the corresponding data files. If the problem keeps happening regularly, you may contact software supplier with relevant details & data.

10) Other errors



The software may show you different types of warnings & error messages, at different points of time.

In all such cases, you must note down the series of commands that led to this problem and take backup the corresponding data files. If the problem keeps happening regularly, you may contact software supplier with relevant details & data.